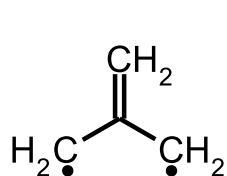
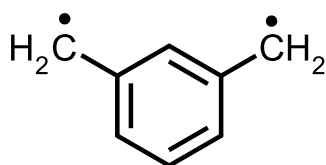


non-Kekulé molecules

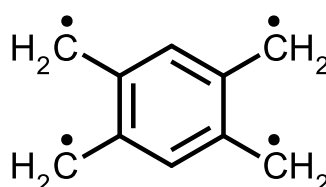
Molecules that are fully conjugated, but each of whose Kekulé structures contains at least two atoms that are not π -bonded. Examples of non-Kekule hydrocarbons are trimethylenemethane (2-methylidenepropane-1,3-diyl) **1**, *m*-benzodiquinomethane (benzene-1,2-diyl dimethyl) **2**, and 1,2,4,5 - tetramethylenebenzene (benzene-1,2,4,5-tetrayl tetramethyl) **3**.



1



2



3

Source:

PAC, 1999, 71, 1919 (*Glossary of terms used in theoretical organic chemistry*) on page 1955